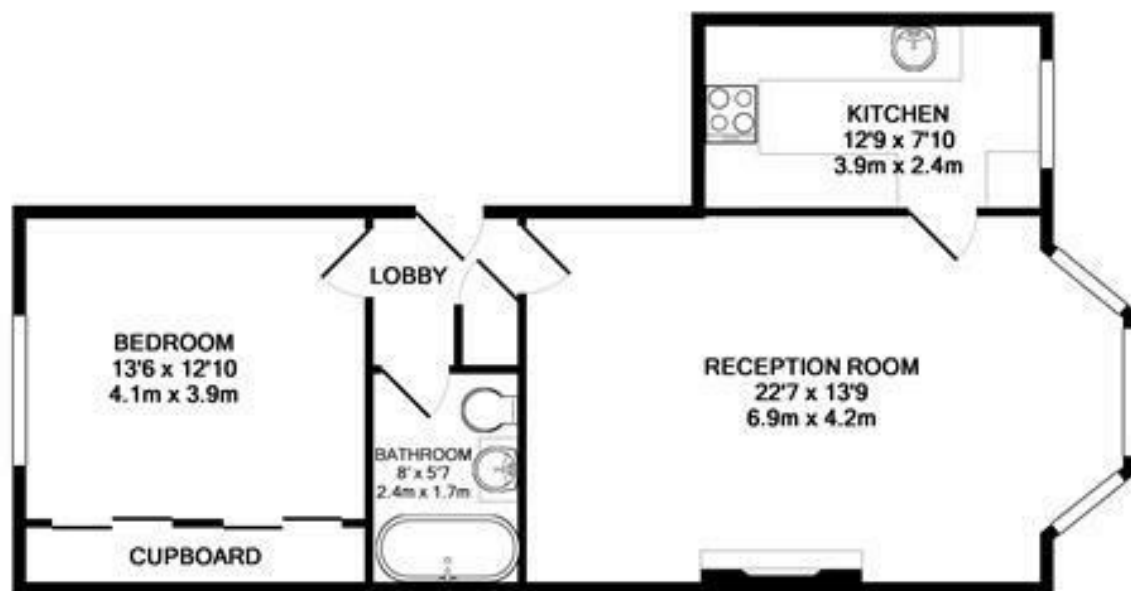


**Cambridge Park
East Twickenham
TW1 2PF**

£599,950

ChaseBuchanan





TOTAL APPROX. FLOOR AREA 632 SQ.FT. (58.7 SQ.M.)
Made with Metropix ©2015

- Viewings accompanied by Chase Buchanan
- Victorian conversion
- First floor
- Vacant possession
- One double bedroom
- Large reception
- Period features
- Council tax band E

Set in a fantastic location and presented in immaculate condition, this larger than average and stunning one double bedroom first floor apartment set in an imposing Victorian building.

The property benefits from a bright and spacious lounge with tall ceilings and large bay windows which allows plenty of natural light in, leading onto a modern eat in kitchen with integrated appliances, beautiful large double bedroom with extensive built in wardrobes and a pretty rear outlook, modern bathroom with over bath shower.

Further benefits include period features throughout, high ceilings, feature fireplace and security entry phone system.

The property is larger than your average conversion and is set in a prime location offering easy access to Marble Hill Park, Richmond Bridge and Town centre as well as St Margarets village.

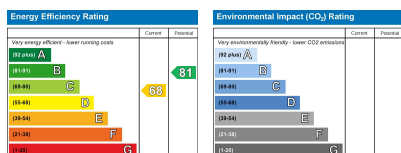
An appointment to view is highly recommended via the vendors sole agents Chase Buchanan at the earliest opportunity.

For more information or to book a viewing, please contact:

020 8744 2434

ChaseBuchanan

124 St Margarets Road, St Margarets, TW1 2AA



Care has been taken in the preparation of these particulars, however, their accuracy is not guaranteed and they do not form part of any contract. Measurements stated must be considered maximum.